

Children's Services

Children and Social Care and Wellbeing Commissioning

Market Position Statement

Commissioning - Children with Disabilities

April 2014 – April 2015

Holly Beaman 07/10/2014

G:\CSF AILS&C\Commissioning 2013\02. Children With Disabilities\CWD Market Position Statement\DRAFT
Children with Disabilities Market Position Statement v1.9 071014.docx

| Contents | Pg |
|---|-----------|
| 1. Executive Summary | 3 |
| 2. Who is this document for? | 3 |
| 3. Description of the Market | 4 |
| 4. Strategy | 5 |
| 5. Future Demand | 5 |
| 6. Consumer Perspectives | 6 |
| 7. Quality | 6 |
| 8. Safeguarding | 7 |
| 9. Current Spend | 8 |
| 10. Current Services and Opportunities for Joint Commissioning | 8 |
| 11. Potential Future Challenge and Opportunities | 9 |
| 12. Potential Future Models of Practice | 9 |
| Appendix A: Provider List | 10 |

Holly Beaman 07/10/2014

1. Executive Summary

The market for children and young people with disabilities is mixed. There is a good range of play and leisure providers but insufficient capacity within the market to provide residential long stay or short break services. There is insufficient provision of personal support services (domiciliary care) particularly for children with complex needs.

There is a steady increase in the number of families who have a personal budget and a direct payment; this will increase further with the introduction of the Children and Families Act in September 2014. As commissioners, we need to understand what families will want to purchase and look at stimulating the market to provide services such as Personal Assistants particularly those willing to do over nights.

The provision of therapies is fragmented; there is a lack of clarity of roles of health and social care Occupational Therapists. Gaps which have been highlighted include; -

- Services in north west Surrey,
- Seating which is used at home and educational settings (such as wheelchairs)
- Services when children and young people are discharged from hospital.

The key pressures on services are for; -

- Children on the autistic spectrum with challenging behaviour
- Children with complex needs.

There are opportunities to jointly commission services across health, education and social care which would deliver better outcomes for children with disabilities and their families and would

2. Who is this document for?

This document is aimed at existing and potential providers of support for children with disabilities in Surrey. It represents the start of a dialogue between the council, people who use services, their families, carers, providers and others, about the vision for the future of this service.

This market position statement is designed to:

- Include the data the market needs to know in order to plan their future role and function.
- Identify the needs and preferences of different service user groups in the market.
- Indicate the changes Surrey County Council would like to see in the market in order to meet the needs and preferences of service users.
- Identify how Surrey County Council will support and intervene in local markets.

We are committed to stimulating a diverse, active market where innovation and energy is encouraged and rewarded and where poor practice is actively discouraged. Providers of services for children with disabilities can learn about the council's intentions as a purchaser of services, and our vision for how services may need to respond to the personalisation of support for children with disabilities.

Holly Beaman 07/10/2014

Voluntary and community organisations can learn about future opportunities and what would enable them to build on their knowledge of local needs in order to develop new activities and services.

People interested in local business development and social enterprise can read about new opportunities in the market and tell us what would help you to come into social care markets and offer innovative services. Social care providers and organisations not currently active in Surrey could find opportunities to use your strengths and skills to benefit local people and develop your business.

3. Description of the Market

Surrey County Council's Children's Services spends £8.4m per year on short breaks for children and young people with disabilities (2013/14). Surrey County Council invests significantly more in short breaks than many other local authorities and it continues to be a priority for the Council.

From this budget £6.3 m is spent on contracts with the voluntary sector for personal support, residential and play and leisure services.

A Local Offer for SEND has been developed which is a web based directory of services (<https://www.surreysendlo.co.uk/>).

Surrey County Council aims to ensure that disabled children and young people have the same short break opportunities as other children and young people. We commission a range of clubs, holiday schemes, sports and care in the community to allow children and young people to take part in activities that they enjoy. The full range of services include:

- Play schemes - after school, holiday and Saturday clubs, clubs that are activity based including cooking, music, arts and crafts and outings.
- Youth groups - social activities for teenagers.
- Activity breaks - weekend or longer activities during the holidays that may include an overnight stay.
- Befriending/buddying - children and young people are matched with a support worker to enjoy activities on a one-to-one basis.
- Sports clubs - specialised sports sessions such as swimming, football and basketball.
- Domiciliary/community care - providing care to children and young people in their own homes or within the community.
- Residential - short stays in a residential setting during the day or overnight on a regular basis.
- Family based - trained carers that look after children and young people for a few hours or overnight in their home.

The Council also runs some services in-house. These include; -

- Applewood – 6-bed short break residential care service in Tadworth.
- Ruth House – 4-flats. Mixture of long stay (52 week) placements, short breaks and Residential Learning Programme in Woking. Specialist in services for children with Autism Spectrum Disorders (ASD).
- Domiciliary Care (Personal Support)
- Occupational Therapist Service – adaptations within the child or young person's home.

Holly Beaman 07/10/2014

Although there are some innovative and high quality services, the market for children with disability services lacks competition particularly in residential short break services and placements for looked after children. There are only two providers in Surrey who take referrals for Looked After Children and Young People with Disabilities; -

- Pastens (Action for Children), Oxted
- Ruth House, Mayford near Woking.

There is a steady increase in the number of families who have a personal budget and a direct payment (currently over 400); this will increase further with the introduction of the Children and Families Act in September 2014. We need to understand what families will want to purchase and build the market so that families have a menu of services/options to choose from. This will include services such as Personal Assistants particularly those willing to do over nights.

The provision of therapies is fragmented; there is a lack of clarity of roles of health and social care Occupational Therapists. Gaps which have been highlighted include; -

- Services in the north west of Surrey,
- Seating which is used at home and educational settings (such as wheelchairs)
- Services when children are discharged from hospital.

There are known pressures on services for; -

- Children on the autistic spectrum with challenging behaviour
- Children with complex needs.

4. Strategy

The Surrey Children with Disabilities Commissioning Strategy (2014 – 2015) sets out the key drivers for children and young people with disabilities and their families. The commissioning priorities for children with disabilities services are; -

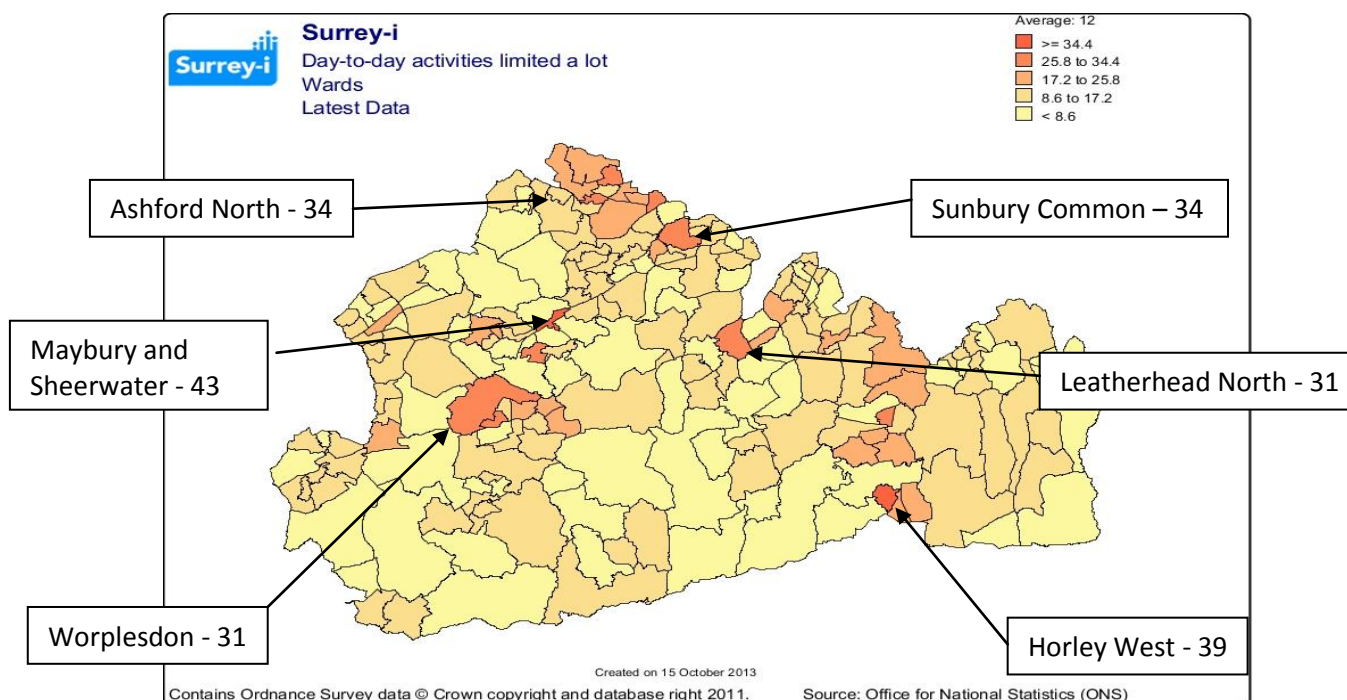
- Setting **clear strategic outcomes** for our partners to meet in relation to disabled children, young people and their families, monitoring progress towards achieving them and holding each other to account
- Promoting early intervention and support for smooth transitions between children and adult services for disabled children and young by identifying individuals earlier, jointly understanding and assessing needs, and facilitating service developments that support personalisation
- Working with key partners to **strengthen integration** between health, social care and education services, and with services provided by wider partners
- Supporting children **in Surrey provision** where this is best for the child
- Supporting the **family as a whole**
- **Putting disabled children and young people, parents and carers at the heart of what we do**
- Providing **cohesive governance** and leadership across the disabled children and young people's agenda by linking effectively with key partners

Holly Beaman 07/10/2014

5. Future Demand

Children with Disabilities Needs Analysis 2014-15. ([LINK HERE](#))

The table below highlights the wards with the highest numbers of children with disabilities aged 0-15 years based on Census data from 2011.



Key messages: -

- Demand will increase by at least 9% in the next 10 years placing further pressure on services.
- Incidents of disability are more prevalent in areas of high deprivation.
- Disabilities often mean multiple needs for children, young people and their families.
- Children and young people with autism and those with complex health needs may see even more significant increases in prevalence.
- Children and young people often present more needs that are challenging, as they get older.

6. Quality

When commissioning services, both internally and externally, quality is of utmost importance to Surrey County Council. Outcome based commissioning is one of the tools we use to shift the emphasis from the services a provider will offer to the outcomes they will achieve for individual children and their families.

Providers will be expected to:

- aim to ensure all children and young people achieve the identified outcomes
- measure the outcomes using the identified and/or other measurement tools
- be proactive in monitoring their own performance against the outcomes
- demonstrate to the council how the service they provided has achieved the outcomes.

Holly Beaman 07/10/2014

We also takes into consideration OfSTED and CQC inspections and will only commission services that are judged as "Good" but will work with providers who are judged as "Requires Improvement" (formally Adequate) to support them to improve their services.

7. Safeguarding

Safeguarding is the main priority and Surrey County Council, the Authority would expect providers to have child protection procedures and staff guidance in place linked to their recruitment and staff appraisal processes.

These should be consistent with the Surrey Safeguarding Children's Board guidance and procedures which can be found on the Surrey County Council website

<http://www.surreycc.gov.uk/social-care-and-health/childrens-social-care/protecting-children-from-harm/surrey-safeguarding-children-board>.

8. Consumer Perspectives

8.1 Children and Young People

Events were held during August 2013 to seek the views of Children and Young People regarding Short Breaks Services. These were facilitated by Barnardos through a series of road shows across Surrey. Key opinions:

- Most popular activities children and young people like are;- bowling, music, cooking, trampolining, theme parks, cinema, walking and seeing friends.
- Things which are important to young people are; -
 - Having fun
 - Making friends
 - Making decisions
 - Being listened to.
- The majority of children and young people wanted to go to places for disabled and non-disabled children.

8.2 Parents and Carers

Public Consultation was carried out between February and May 2014 for the Joint Strategic Review of Short Breaks. Key issues raised were; -

- Consistency of routine and familiarity of the facilities and staff for children, young people and their families.
- Ease of transport.
- Value of safe overnight respite to families.
- Many describe their overnight respite option as a "lifeline" and their only option for ever having a sense of normalcy at home, for parents and particularly for siblings. Family carers explain that having an overnight without the young person at home is both restful and restorative, enabling them to regain the energy required to care for the young person integrated within the family the majority of the time and for the long-term.
- Facilities are described as their child's "home away from home"; families are generally pleased with the care their child receives, indicating that staff are seen as an extended family, and stating how much their child enjoys their stays.

Holly Beaman 07/10/2014

- Families reject the idea that having carers come to their house will be equivalent to having the young person on overnight respite out of the house”.

Independent Analysis of Consultation responses (Christina Silver QDAS, 11th July 2014).

9. Current Spend

Surrey Children’s Social Services’ annual spend for children with disabilities is £11.7 million (2013-14 figures).

The table below shows Surrey County Council Spend on Short Breaks both on in house services and external spend for 2013-14.

| Short Break Spend 13/14 - as at 31st October 2013 | In House (£'000) | External (£'000) |
|---|------------------|------------------|
| Play and Leisure | | 1,797 |
| Personal Support | 376 | 1,506 |
| Residential (Short Breaks) | 1,449 | 701 |
| Total | | 5,829 |

10. Current Services and Opportunities for Joint Commissioning

The below diagram highlights the range of services commissioned/provided by each agency, but also those services which cross over all three services. These cross overs present opportunities to jointly commission future services for children and young people with disabilities.

| | The Services | Cross Over Services |
|--------------------|---|---|
| Health | <ul style="list-style-type: none"> • Assess & treat physical and psychiatric conditions and • Treat speech disorders, language & communication • Therapies; speech & language, OT, diet, nursing, physio • Long-term support, co-ordination of services & paediatric advice. • Children who suffer from a range of health conditions • Complex Needs Nursing Teams • Transport | <ul style="list-style-type: none"> • Therapies – OT, speech & language, nursing • Support in the home • Carer Support • Short Breaks • Personal Budgets • Assessments • Equipment • Transport • Transition to Adult Life • Community Paediatricians |
| Social Care | <ul style="list-style-type: none"> • Assessing, safeguarding and supporting children with additional needs and their families to live as independently as possible • Providing short break service for CYP and their families • Provision of direct payments • Domiciliary Care • Provision of advice and guidance • OT providing equipment and adaptations at home | |
| Education | <ul style="list-style-type: none"> • SEN (including NMI sector) • Special Schools (including non-Surrey Schools) • SEN Transport • Educational Psychology • Portage, Early Bird • Locality Teaching • Early Support Service (0-5 years) • Physical and Sensory Service • Autism Outreach • Therapies – Speech and Language, OT | |

Holly Beaman 07/10/2014

11. Future Challenges and Opportunities

- Providing services and support to an increasing number of children and young people with Severe Learning Disabilities, Autism Spectrum Disorders and challenging behaviour.
- Resource allocation and how to deliver services to families with a personal budget.
- More intergration across different agencies.
- Team around the Family approach – more specialist support to parents and carers, eg parenting support for young people with challenging behaviour.
- More inclusive universal services, “including me”.
- Links to Early Help “offer”.
- Cross over with Emotional Health and Wellbeing Services.
- More seamless transition between key stages, such as Early Support to CwD Teams or CwD Teams to Adults Services.

12. Possible Future Models of Practice

- Voluntary and private providers working together in consortia to deliver services to children with disabilities and their families.
- Framework of providers which social workers and families can directly purchase from.
- Services which support children and young people with disabilities to access universal services.
- Co-production/ co-design of new services with children and young people and their families.

Appendix A: Provider List

In House Provision: -

- Applewood Overnight Residential Care
- Ruth House Overnight Residential Care (ASD Specialist)
- Domiciliary Care Service
- Occupational Therapies (adaptations within the home)

Play and Leisure Providers; -

1. Reigate and Redhill YMCA
2. Link Leisure
3. Action for Children
4. Shooting Star CHASE
5. Barnardo's
6. Crossroads Care Surrey
7. White Lodge Centre
8. Disability Challengers
9. Core Assets Children's Services
10. Stopgap Dance Company
11. ACTION FOR BLIND PEOPLE
12. Family Resource Centre UK
13. The National Autistic Society
14. Rhythmix
15. Cycling Projects
16. Live & Learn
17. The Children's Trust
18. Animated Youth
19. Freewheelers Theatre and Media Ltd.
20. Rainbow Trust Children's Charity

Personal Support Providers:

1. Action for Children
2. Voyage Care
3. Prospect Housing
4. Cross Roads
5. White Lodge
6. Banardos
7. Avenues

Holly Beaman 07/10/2014

8. Core Assets
9. KIDS
10. Live & Learn

Residential Providers: -

1. White Lodge – Short Breaks
2. Cherry Trees – Short Breaks
3. Shooting Star – Complex Health/ End of Life Care/ Short Breaks
4. Children's Trust – Complex Health – Short Breaks
5. Pastens (Long Stay)
6. Light House (Long Stay and Short Breaks)

Holly Beaman 07/10/2014